

Base mapping produced under license with the Ontario Ministry of Natural Resources © 2010.
 Source Protection Region Boundary provided by Ontario Ministry of Environment, 2006.
 Wellhead Capture Zone and Vulnerability scoring provided by Waterloo Numerical Modelling, Report for Well Head Protection Area Delineation Project, 2009.
 Groundwater Vulnerability Assessment Municipality of Huron East (Seaforth), 2009.
 Intake Protection Zone and Vulnerability scoring provided by W. F. Baird & Associates Coastal Surface Water Vulnerability Analysis for Goderich Intake, August, 2007.
 Impervious Surface produced by ABMV SPR, 2010

Map 4.46 Total Impervious Surface Within Vulnerable Areas Central Huron

LEGEND	
	Source Protection Area
	Municipal Boundary
	County Boundary
	Road
	Watercourse
	Cities and Towns
	Municipal Well
	Surface Water Intake
	Wellhead Protection Zone
	Zone A - 100m
	Zone B - 2yr tot
	Zone C - 5yr tot
	Zone D - 25yr tot
	Zone E - GUDI zone
	Intake Protection Zone
	IPZ1
	IPZ2
	Impervious Surface Percent
	< 1.0
	1.0 - < 8.0
	8.0 - < 80.0
	> 80.0
	1km Grid

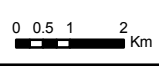


Asuable Bayfield & Maitland Valley Source Protection Region

Map 4.46 Total Impervious Surface Within Vulnerable Areas Central Huron

ABCA/MVCA GIS Services
 Copyright © Queen's Printer, 2011
 This map is for illustrative purposes only, it is not a legal survey.

File: C:\swplsmall_projects\cathy\assessment_report_municipal\imp_surface_AB_central_huron_v7.mxd
 Date: March 04, 2011
 Produced By: Darrell Innes ABCA/MVCA DWSP Region



Map Projection: UTM NAD83 Zone 17