



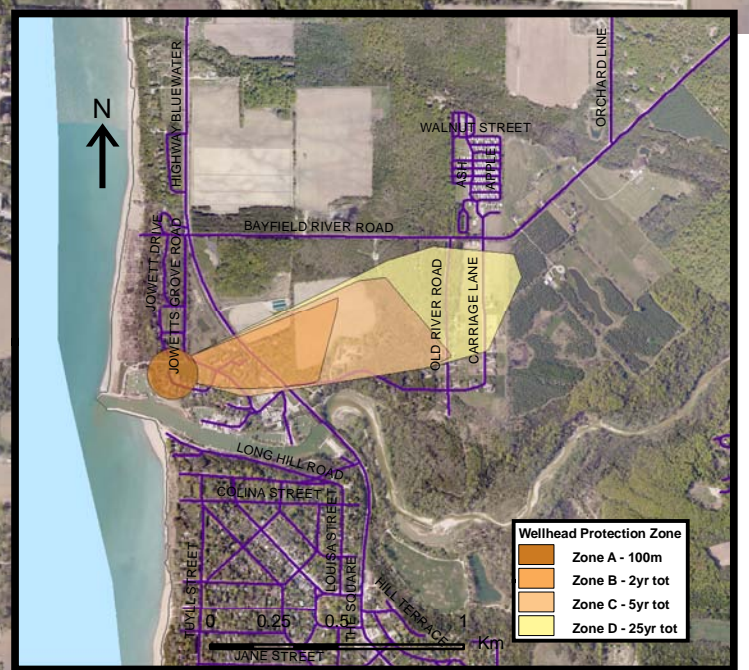
Please see Appendix A for threats associated with the following provincial threats tables:

Tables to follow!

Sam Well Supply

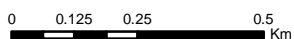
Harbour Lights Well

Carriage Lane Well



### LEGEND

- Conservation Authority
- Entire WHPA Capture Zone
- Municipal Well
- WHPA Threat Area**
- GWVA in Tot Zones - 100m, 2yr
  - 10
  - 8
  - 6
- 2 Year Tot Zone
- Century Heights GUDI Threat Area
- GWVA
  - 7.2
- IPZ Threat Area**
- GWVA
  - 6
  - 5.4
  - 5



Photos from First Base Solutions



Ausable Bayfield & Maitland Valley Source Protection Region

## Map 4.33 Areas Where Pathogen Threats Can Be Significant, Moderate or Low Harbour Lights System



ABCAMVCA GIS Services  
Copyright (c) Queen's Printer, 2009  
This map is for illustrative purposes only, it is not a legal survey.

C:\swpl\small\_projects\bmross\whpa\_database\_threats\whpa\_path\_harbour\_lights\_v9.mxd  
Date: November 10, 2009  
Produced By: Darrell Innes ABCA/MVCA DWSP Region

Map 4.33 Areas Where Pathogen Threats Can Be Significant, Moderate or Low Harbour Lights System

Map Projection: UTM NAD83 Zone 17