

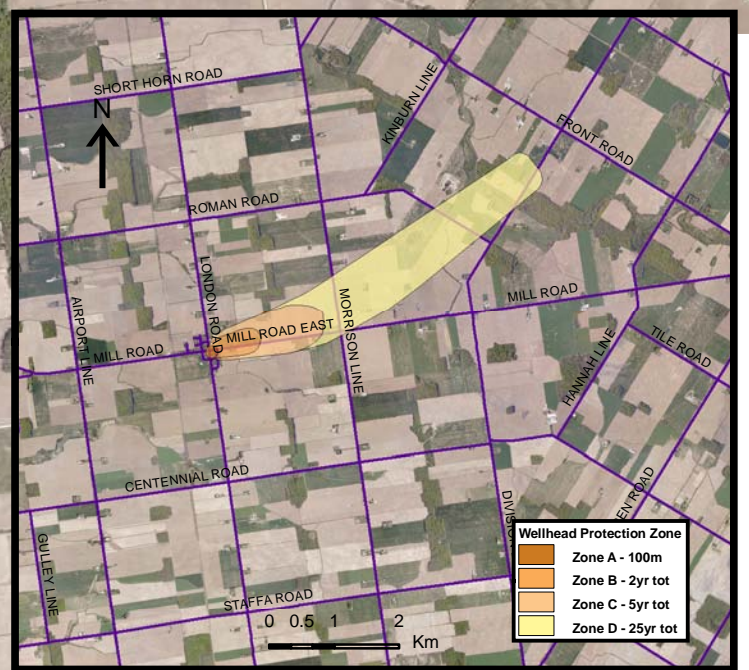
460000



Please see Appendix A for threats associated with the following provincial threats tables:

Tables to follow!

Brucefield Well Supply

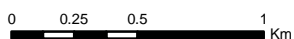


460000

Map 4.19 Areas Where Pathogen Threats Can Be Significant, Moderate or Low Brucefield System

LEGEND

- Conservation Authority
- Entire WHPA Capture Zone
- Municipal Well
- WHPA Threat Area**
- GWVA in Tot Zones - 100m, 2yr**
- 10
- 8
- 6
- 2 Year Tot Zone
- Century Heights GUDI Threat Area**
- 7.2
- IPZ Threat Area**
- GWVA**
- 6
- 5.4
- 5



Photos from First Base Solutions



Ausable Bayfield & Maitland Valley Source Protection Region

Map 4.19 Areas Where Pathogen Threats Can Be Significant, Moderate or Low Brucefield System



ABCAMVCA GIS Services
Copyright (c) Queen's Printer, 2009
This map is for illustrative purposes only, it is not a legal survey.

C:\swp\small_projects\bmross\whpa_database_threats\whpa_path_brucefield_v9.mxd
Date: November 10, 2009
Produced By: Darrell Innes ABCA/MVCA DWSP Region