

460000

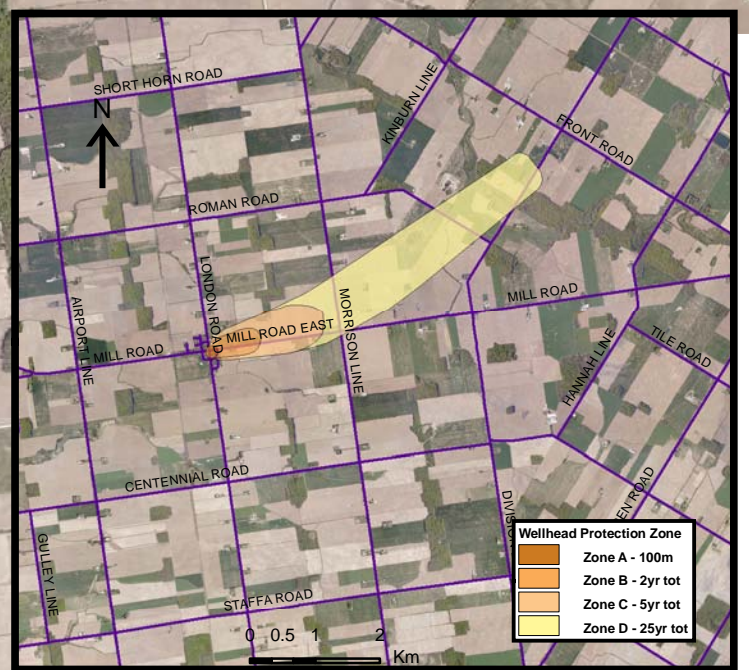


Please see Appendix A for threats associated with the following provincial threats tables:

Tables to follow!

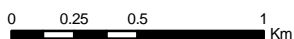
Brucefield Well Supply

4820000



### LEGEND

- |                          |                                  |                 |
|--------------------------|----------------------------------|-----------------|
| Conservation Authority   | <b>WHPA Threat Area</b>          | IPZ Threat Area |
| Entire WHPA Capture Zone | Tot Zones - 100m, 2yr, 5yr       | GWVA 6          |
| Municipal Well           | 25 year tot with GWVA 6          | 5.4             |
|                          | 5 Year Tot Zone                  | 5               |
|                          | Century Heights GUDI Threat Area |                 |
|                          | GWVA 7.2                         |                 |



Photos from First Base Solutions



Ausable Bayfield & Maitland Valley Source Protection Region

## Map 4.20 Areas Where DNAPL Threats Can Be Significant, Moderate or Low Brucefield System



C:\swp\small\_projects\bmross\whpa\_database\_threats\whpa\_dnapl\_brucefield\_v9.mxd  
Date: November 10, 2009  
Produced By: Darrell Innes ABCA/MVCA DWSP Region

Map Projection: UTM NAD83 Zone 17

ABCAMVCA GIS Services  
Copyright (c) Queen's Printer, 2009  
This map is for illustrative purposes only, it is not a legal survey.

0000289